



LG MAGNIT LAAA Series TAA Compliant

136" MicroLED Display



Easy Installation



Achieving Deep Black



Intelligent Processor

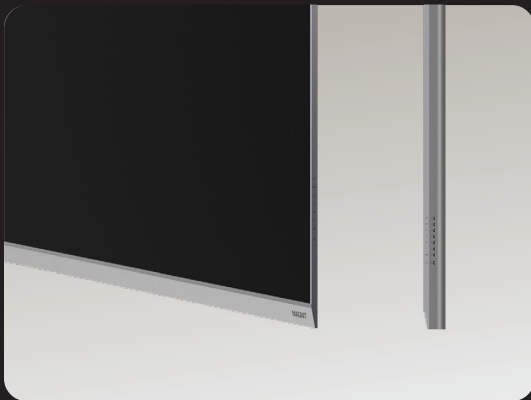
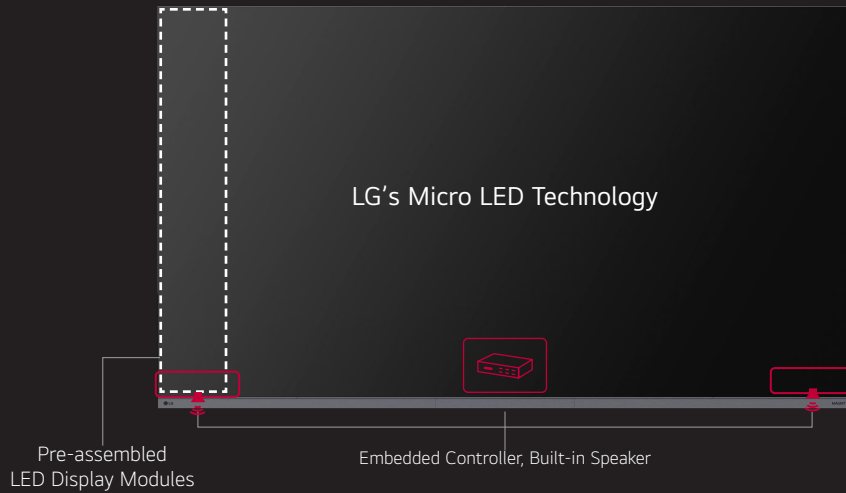


Compatible with
LG One:Quick|Share

LAAA Series	LAAA015-G2
Screen Size	136"
Resolution	Full HD (1920 x 1080)
Pixel Pitch	1.56 mm
Max Brightness After Calibration	500 nits / 1,000 nits Peak
Service Access	Front
IP Rating (Front/Rear)	IP50 / IP20

Clear Vision, Great Decision.

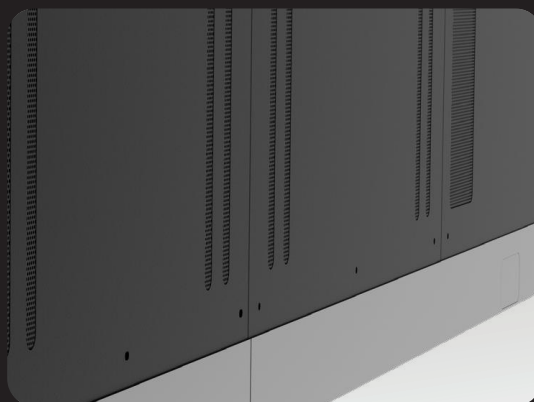
Easy-to-Install Micro LED display for easy choice, easy installation



A sleek and slim design



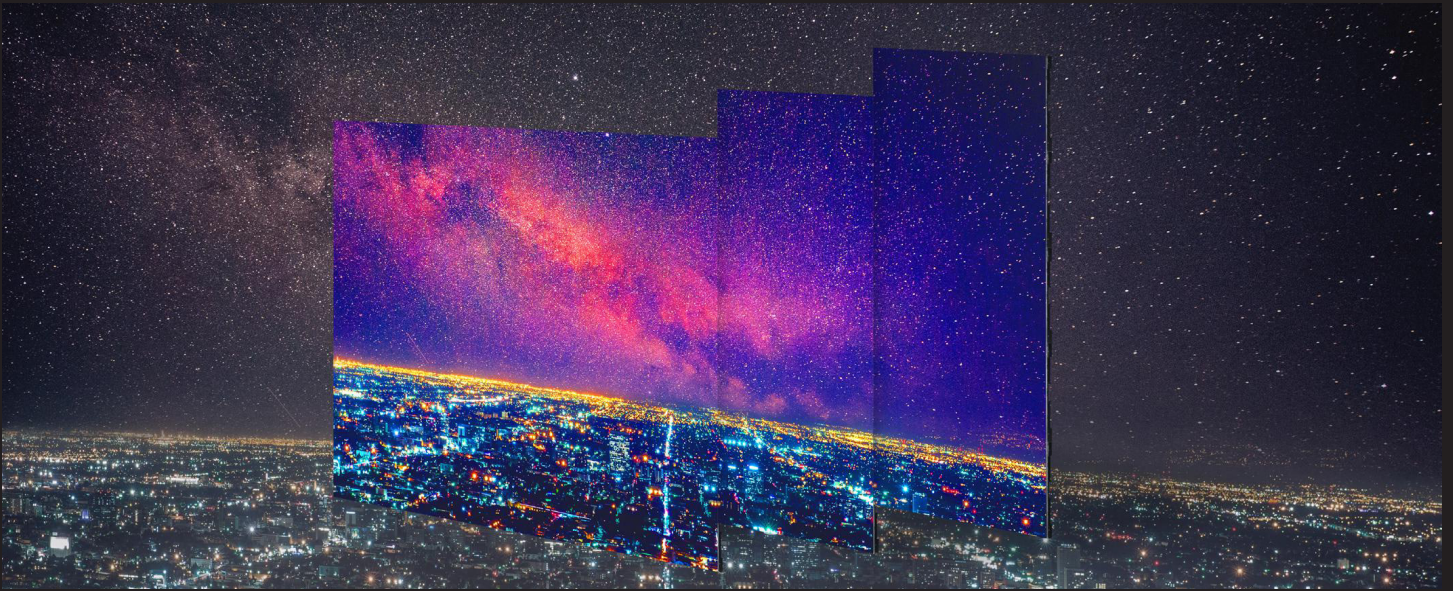
Front-accessible design for easy interface connectivity



Neatly organized vent hole design on the back

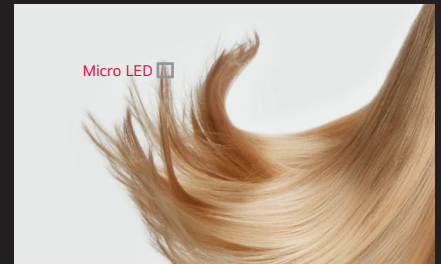


Easy access to buttons



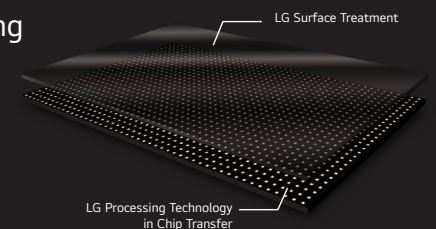
Improving Visual Precision with Micro Pixel Technology

LG MAGNIT's Micro Pixel Pitch Technology offers remarkable visual precision. Our advanced microLED chips provide impressive detail accuracy and precise light control, delivering crystal-clear images on the display. With accurate color expression, every hue is rendered with stunning clarity and depth, providing a jaw-dropping visual experience. Enjoy the fineness of display technology with LG MAGNIT.



Enhanced Uniformity with LST (LG Surface Treatment) Technology

LG MAGNIT's innovative Chip Transfer and Surface Treatment Technology enhances white uniformity and reduces color distortion across a wide viewing angle, delivering true and accurate viewing experiences. This technology ensures remarkable color uniformity, resulting in superb image quality.



* Based on LG's conventional LED signage without LG's chip transfer and surface treatment technology.



Achieving Deep Black with Black Coating Technology

LG MAGNIT’s advanced and precise method for direct bonding micro-sized chips onto circuit boards, combined with the black coating technology and reduced spacing between the chips and the board, creates a stunning black expression that stands out compared to SMD-type LED displays. This makes it the ideal choice for displaying content that requires deep black color, ensuring that every image is rich, vibrant, and true to life.



AI-powered Viewing Experience with Alpha 7 Processor

LG MAGNIT features an advanced AI-powered Alpha 7 Intelligent Processor that provides clarity and sharpness to deliver an immersive viewing experience. Its advanced AI technology enables the processor to recognize and analyze content, tailoring the display settings for each individual scene to create a highly realistic and vivid image possible.



Single DVLED Screen with Built-in Speaker

The LAAA series is a single 136-inch large screen which includes an embedded controller and built-in speaker. Redefining the expectation that DVLED displays can be difficult and complex to install, the LAAA doesn't require controller connections or module configuration. After a simple installation process, all you need to do is to turn on the screen with a remote control just like home TV.



High Performance with webOS

Built-in Quad Core SoC (System on Chip) can execute several tasks at once for providing smooth content playback. Also, LG webOS Smart Platform enhances user convenience with its intuitive user interface and provides system integrators and developers simple app development tools* such as SDK (Software Development Kit), SCAP, sample applications.

* The webOS Signage Developer site (<http://webossignage.developer.lge.com>) provides SDK tools and documentation for creating apps on LG Digital Signage. This is only open to partners.

- 1 Mount the frame on the wall using the wall mounts
- 2 Attach each module-unit to the frame, preconfigured by LG's module alignment process
- 3 Assemble bezels
- 4 Connect AC Power (One for LAAA015, Two for LAAA007)

Simple Installation Process

Create this LAAA display with five easy-to-assemble module-units. Each unit consists of 30 modules and is preconfigured with reduced gaps thanks to LG MAGNIT's professional module alignment process. Tightly hold the screen with its refined bezels and back cover, and connect the power cables (One for LAAA015, Two for LAAA007). This allows for neat installation without the complicated power connection.

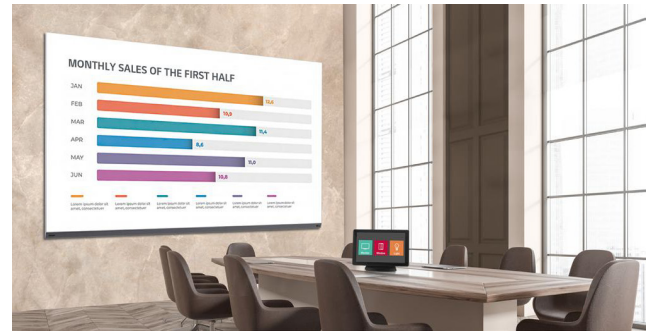
* Fixing screws or installing wall mount/accessories is need additionally.



Office Meeting Mode

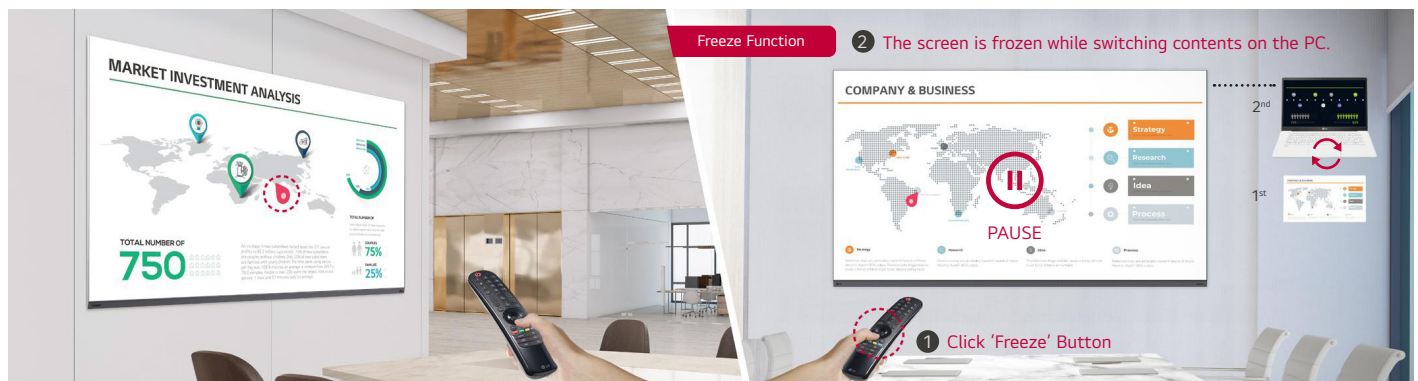
With Office Meeting Mode, easily configure meeting room details like the room number and current time. It also includes convenient features like automatic input switching, a presentation timer, and adjustable settings such as auto-brightness and picture mode.

* Users can enable Office Meeting Mode at EZ Setting menu of the Signage.



Compatible with AV Control Systems

The LAAA series has been certified Crestron Connected® for a higher level of compatibility with professional AV controls to achieve seamless integration and automated network based control.



Magic Remote for Easy of Use

With the LG Magic Remote, you can select and run the menu of the signage just like using a mouse and its cursor can be used as a laser pointer. In addition, through the newly added 'FREEZE' button on the remote control, users can temporarily freeze the screen while switching contents on the PC, so that users are able to have uninterrupted meetings without exposing its switching process.

* The FREEZE function is only available when the LAAA is connected to an external input signal.

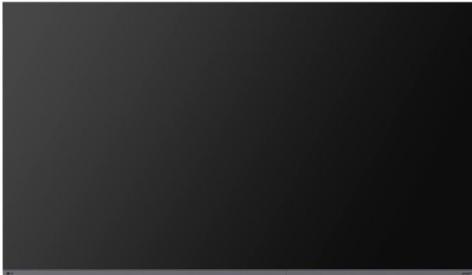


LG's Wireless Screen Sharing Solution, LG One:Quick|Share

LG One:Quick Share is a wireless screen sharing solution available through the LAAA series, USB accessory unit, and its app. You can simply share personal PC screen to the display with it's USB accessory button and embedded Wi-Fi, and can adjust the basic setting values (volume, picture mode, auto bright, etc.) of the connected display without a remote control. Also, the Office Meeting Mode helps you to display the agenda, note before the meeting starts.*.

* Users need to set up SoftAP enabled at Network Menu of the Signage. LG One:Quick Share needs to be purchased separately and is compatible with Windows10 and MacOS 10.15 operating systems.

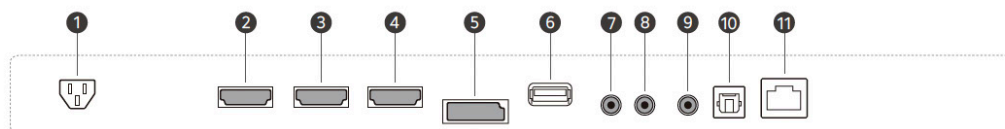
PRODUCT INFORMATION



LAAA Series	LAAA015-G2
Screen Size	136"
Pixel Pitch	1.56 mm
Max Brightness After Calibration	500 nits / 1,000 nits Peak
Weight per Screen	418.9 lbs. / 190 kg
Service Access	Front
IP Rating Front / Rear	IP50 / IP20

CONNECTIVITY

LAAA015



- ① AC-IN
- ② HDMI 1
- ③ HDMI 2

- ④ HDMI 3
- ⑤ DP
- ⑥ USB

- ⑦ RS-232C IN
- ⑧ RS-232C OUT
- ⑨ IR

- ⑩ OPTICAL DIGITAL AUDIO OUT
- ⑪ LAN
- ⑫ AC-IN

SPECIFICATIONS

LAAA015-G2

Physical Parameters	Screen Size	136"
	Pixel Configuration	Micro
	Pixel Pitch (mm)	1.56
	Screen Resolution (W x H)	1,920 x 1,080
	Module Dimensions (W x H, mm)	300 x 112.5
	No. of Modules per Cabinet (W x H)	10 x 15 (Total 150)
	Dimensions (W x H x D, Including Bezel)	118.3 x 68.6 x 2.3 in. 3,005 x 1,742 x 57.4 mm
	Screen Surface Area (m ²)	5.06
	Weight per Screen	418.9 lbs. / 190 kg
	Physical Pixel Density (pixels/m ²)	409,600
	Flatness of Cabinet (mm)	±0.2
	Cabinet Material	Steel
Service Access	Front	
Optical Specifications	Max. Brightness After Calibration	Up to 500 nits / 1000 nits Peak
	Color Temperature (K)	3,200-9,300
	Visual Viewing Angle (Horizontal)	160°
	Visual Viewing Angle (Vertical)	160°
	Brightness Uniformity	95%
	Color Uniformity	±0.015 Cx, Cy
	Contrast Ratio	25,000 : 1 @ 10lux
	Processing Depth (bit)	20 (HDR10, HDR10 Pro)
Electrical Specifications	Power Consumption (W/Screen, Max.)	1,050
	Power Consumption (W/Screen, Avg.)	500
	Power Consumption (W/m ² , Max.)	208
	Heat Dissipation (BTU/h/Screen, Max.)	3,583
	Heat Dissipation (BTU/h/Screen, Avg.)	1,706
	Heat Dissipation (BTU/h/m ² , Max.)	710
	Power Supply (Vac)	100 to 240
	Frame Rate (Hz)	50 / 60
	Refresh Rate (Hz)	3,840
Operation Specifications	Operating Temperature	32°F to 104°F / 0°C to 40°C
	Operating Humidity	10-80% RH
	IP Rating Front / Rear	IP50 / IP20
Regulatory & Certifications	FCC	Class "A"
	UL	IEC 62368-1 / IEC 60950-1
	RoHS (Environmental)	Yes
	BS (Fire Protection)	BS 476 Part 7 Class 1
	TAA Compliant	Yes
Built-in Speakers		10 W + 10 W
Controller		Embedded (webOS)
Connectivity		HDMI (3), DP (1), USB, LAN, RS-232C In/Out, IR, Optical Digital Audio Out
Wi-Fi / Bluetooth		Yes / Yes
Warranty & Other	Warranty	3 Year Limited
	Crestron Connected®	Yes
	Expandable Display	Yes (Side-by-Side, 1xN)
	Included Remote Controls	IR Remote, Magic Remote

* Specifications are subject to change without notice. Please make sure to check the product manual for details about product usage.